



**COPPER-FIN®
WATER HEATER
Submittal Sheet**

CWA-Sub-03

COPPER-FIN® GAS WATER HEATER (MODELS CW 90 - 500)

JOB NAME _____

LOCATION _____

ARCH./ENGR. _____

WHOLESALE _____

MECH. CONTRACTOR _____

MODEL NO. _____

TYPE GAS _____

Btu/hr INPUT _____

RECOVERY RATE IN GPH _____ @ _____ °F RISE

NOTES

Standard Features

- 82% Thermal Efficiency
- Built-In Draft Diverter
- Stainless Steel Burners
- ASME Copper Finned Tube Heat Exchanger
- 160 psi Working Pressure
- Gasketless Heat Exchanger Design
- All Bronze Circulating Pump
- Pump Delay/Freeze Protection
- Remote Tank Thermostat
- Glass-Lined Water Surfaces
- Loch-Heat Ceramic Tile Combustion Chamber
- ASME Temperature & Pressure Relief Valve
- Manual Reset High Limit
- Terminal Strip
- Self Diagnostic Indicator Lights
- Automatic Reset High Limit
- 24 Volt Control System
- CSA Design Certified for Alcove Installation
- CSA Design Certified for Installation on Combustible Floors
- 3 Year Limited Warranty on Heat Exchanger

Optional Equipment

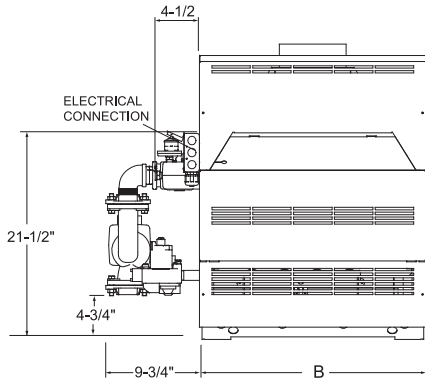
Place an X in the box by all options that apply

- Adjustable High Limit w/ Manual Reset
- Contacts on any Failure (CW 315-500)
- Contacts for Air Louvers (CW 315-500)
- Cupro-Nickel Heat Exchanger
- Flow Switch
- Low Water Cut-Off
- Multi-Stack Frame
- PVC Venting Kit (CW 90-135)

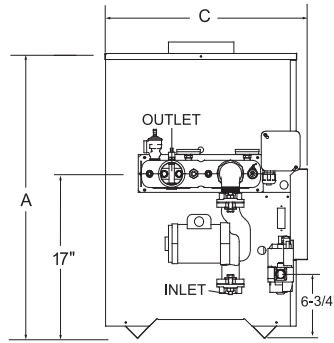
Firing Controls

- F1 - Standing Pilot (Standard CW 90-270)
- F9 - Intermittent Spark Ignition (Standard CW 315-500)
- F13 - GE GAP/FM/IRI
- F7 - California Code (CW 225-500)

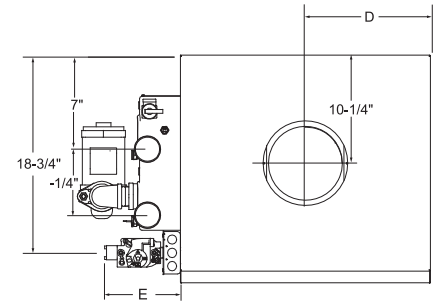
Copper-Fin® Gas Water Heater Dimensions & Specifications



Front View



Side View



Top View

Model Number	Btu/Hr Input	GPH @ 100°F Rise	A	B	C	D	E	Vent Size	Gas Conn.	Shipping Weight
CWN090PM	90,000	89	29-1/2"	15-1/2"	21-1/2"	7-3/4"	6-1/4"	5"	1/2"	175
CWN135PM	135,000	134	29-1/2"	19-1/2"	21-1/2"	9-3/4"	6-1/4"	6"	1/2"	195
CWN180PM	180,000	179	29-1/2"	23-1/2"	21-1/2"	11-3/4"	7-1/4"	7"	3/4"	220
CWN199PM	199,999	198	29-1/2"	26-1/2"	21-1/2"	13-1/4"	7-1/4"	7"	3/4"	230
CWN225PM	225,000	224	29-1/2"	26-1/2"	21-1/2"	13-1/4"	7-1/4"	7"	3/4"	235
CWN270PM	270,000	268	29-1/2"	29 1/2"	21 1/2"	14 3/4"	7-1/4"	8"	3/4"	240
CWN315PM	315,000	313	29-1/2"	32-1/2"	21-1/2"	16-1/4"	6-1/4"	8"	3/4"	250
CWN360PM	360,000	358	29-1/2"	35-1/2"	21-1/2"	17-3/4"	8-1/4"	9"	1"	270
CWN399PM	399,999	397	29-1/2"	44-1/2"	22"	22-1/4"	5-1/2"	10"	1"	340
CWN500PM	500,000	497	34-1/2"	52-1/2"	22"	26-1/4"	9-1/2"	10"	1"	365

Notes: Change 'N' to 'L' to denote L.P. gas models

Inlet water connections are 1-1/2" NPT and outlet water connections are 2" NPT on 6-1/4" centers

Approved for indoor installation only

Performance data based on manufacturer test results

Electrical Requirements: 120 VAC / 2.5 AMP



Lochinvar, LLC • 300 Maddox Simpson Pkwy • Lebanon, TN 37090 • 615-889-8900/Fax: 615-547-1000

www.Lochinvar.com